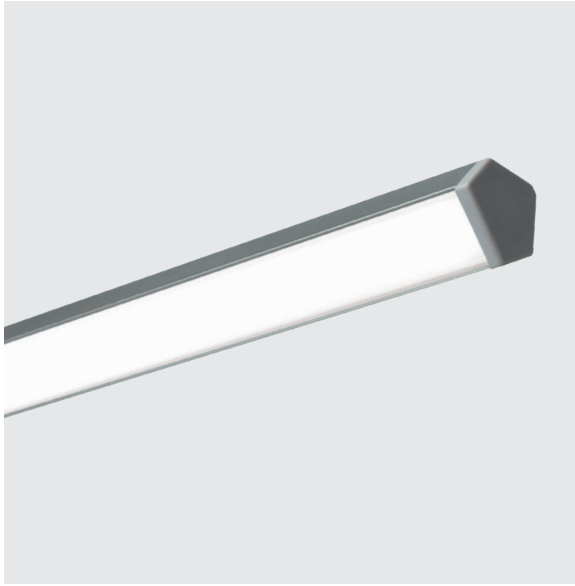


Tokio Mini



Sharp Angled

Body Corpo

Symmetrical linear profile

Profilo lineare simmetrico

Fastening

Fissaggio

Caps + Magnets
Caps + Silicone
Heads with screws

Tappi + Magneti
Tappi + Silicone
Testatine con viti

Screen

Schermo

Opal OP30 (Screening 30%)

Opale OP30 (Scherm. 30%)

Wiring set

Cavo alimentazione

2000 mm • 78,74 "

2000 mm

Custom size

Lunghezza ordinabile

Caps + Magnets:
Up to 2500 mm • 98,43 "
Caps + Silicone:
Up to 3000 mm • 118,10 "
Heads with screws:
Up to 1500 mm • 59,06 "

Tappi + Magneti:
Fino a 2500 mm
Tappi + Silicone:
Fino a 3000 mm
Testatine con viti:
Fino a 1500 mm

Finishing

Finitura

● Grey anodized

● Anodica grigia

Listings and marks

Certificazioni e marchi



LED
LED



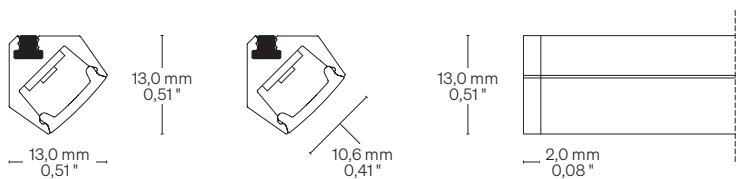
Light Luce

	144 LED/m • 44 LED/ft	168 LED/m • 52 LED/ft	182 LED/m • 56 LED/ft	TW - 252 LED/m • 77 LED/ft Tunable White
Light source Sorgente luminosa				
Power consumption Consumo energia	10,0 W/m • 3,1 W/ft	15,0 W/m • 4,6 W/ft	20,0 W/m • 6,1 W/ft	20,0 W/m • 6,1 W/ft
CCT K	● 2700 K ● 3000 K ● 3500 K ● 4000 K ● 5000 K	● 2700 K ● 3000 K ● 3500 K ● 4000 K ● 5000 K	● 2700 K ● 3000 K ● 3500 K ● 4000 K ● 5000 K	● 2200 - 5700 K
Mixing on demand Miscelazione su richiesta				
CRI R9 Rf @ 3000 K Rg @ 3000 K MacAdam ellipse	Min 90 Min 50 92 100 3	Min 90 Min 50 92 100 3	Min 90 Min 50 92 100 3	Min 90 Min 50 92 100 3
Luminous flux Flusso luminoso ● 3000 K	↓ OP30 - 78 lm/W 783 lm/m • 239 lm/ft	↓ OP30 - 83 lm/W 1270 lm/m • 387 lm/ft	↓ OP30 - 98 lm/W 1968 lm/m • 600 lm/ft	↓ OP30 - 55 lm/W 1100 lm/m • 335 lm/ft
Input voltage Tensione di ingresso	24 V DC	24 V DC	24 V DC	24 V DC

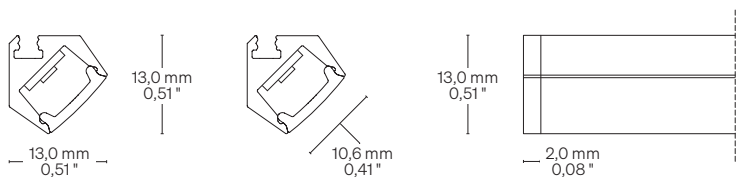
Dimensions Dimensioni

Scale/Scala 1:1

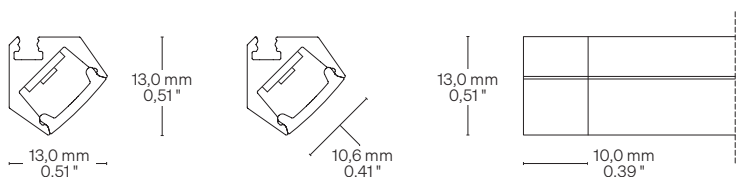
TAM Caps + Magnets Tappi + Magneti



TAS Caps + Silicone Tappi + Silicone

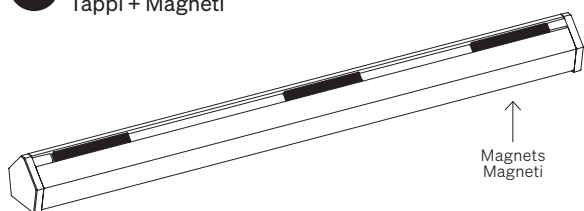


TE Heads with screws Testatine con viti

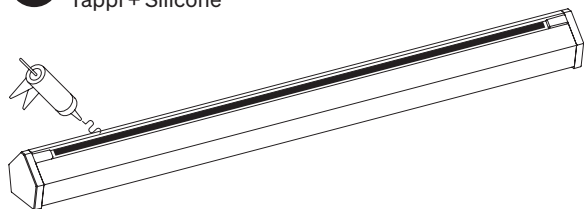


Fastening options Opzioni di fissaggio

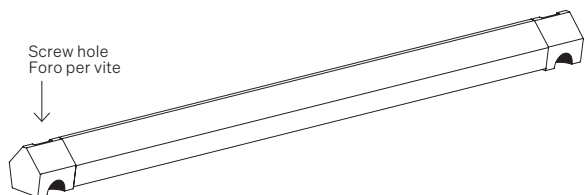
TAM Caps + Magnets Tappi + Magneti



TAS Caps + Silicone Tappi + Silicone



TE Heads with screws (Hole size: 2,8 mm • 0,11") Testatine con viti (Diametro foro: 2,8 mm)



Order code Codice ordine

Basic code Codice base

- **TKSF144** Tokio Mini
144 LED/m • 44 LED/ft
10,0 W/m • 3,1 W/ft
- **TKSF168** Tokio Mini
168 LED/m • 52 LED/ft
15,0 W/m • 4,6 W/ft
- **TKSF182** Tokio Mini
182 LED/m • 56 LED/ft
20,0 W/m • 6,1 W/ft
- **TKSF252** Tokio Mini
TW 252 LED/m • 77 LED/ft
2200 - 5700 K
20,0 W/m • 6,1 W/ft

CCT K CCT K

- **WW27** 2700 K
- **WW30** 3000 K
- **NW35** 3500 K
- **NW** 4000 K
- **CW** 5000 K

Fastening options Opzioni di fissaggio

- **TAM** Caps + Magnets
Tappi + Magneti
- **TAS** Caps + Silicone
Tappi + Silicone
- **TE** Heads with screws
Testatine con viti

Screen Schermo

- **OP30** Opal/Opale 30

Custom size Lunghezza ordinabile

- -- Specify the size
Specificare la misura

Order example Esempio ordine

- **TKSF144 WW27 TAM OP30 • 0,32**
Tokio Mini, 144 LED/m • 44 LED/ft,
10,0 W/m • 3,1 W/ft, Warm White 2700,
Caps + Magnets, Opal 30 screen • 0,32 m
- Tokio Mini, 144 LED/m, 10,0 W/m,
Warm White 2700, Tappi + Magneti,
Schermo opale 30 • 0,32 m